

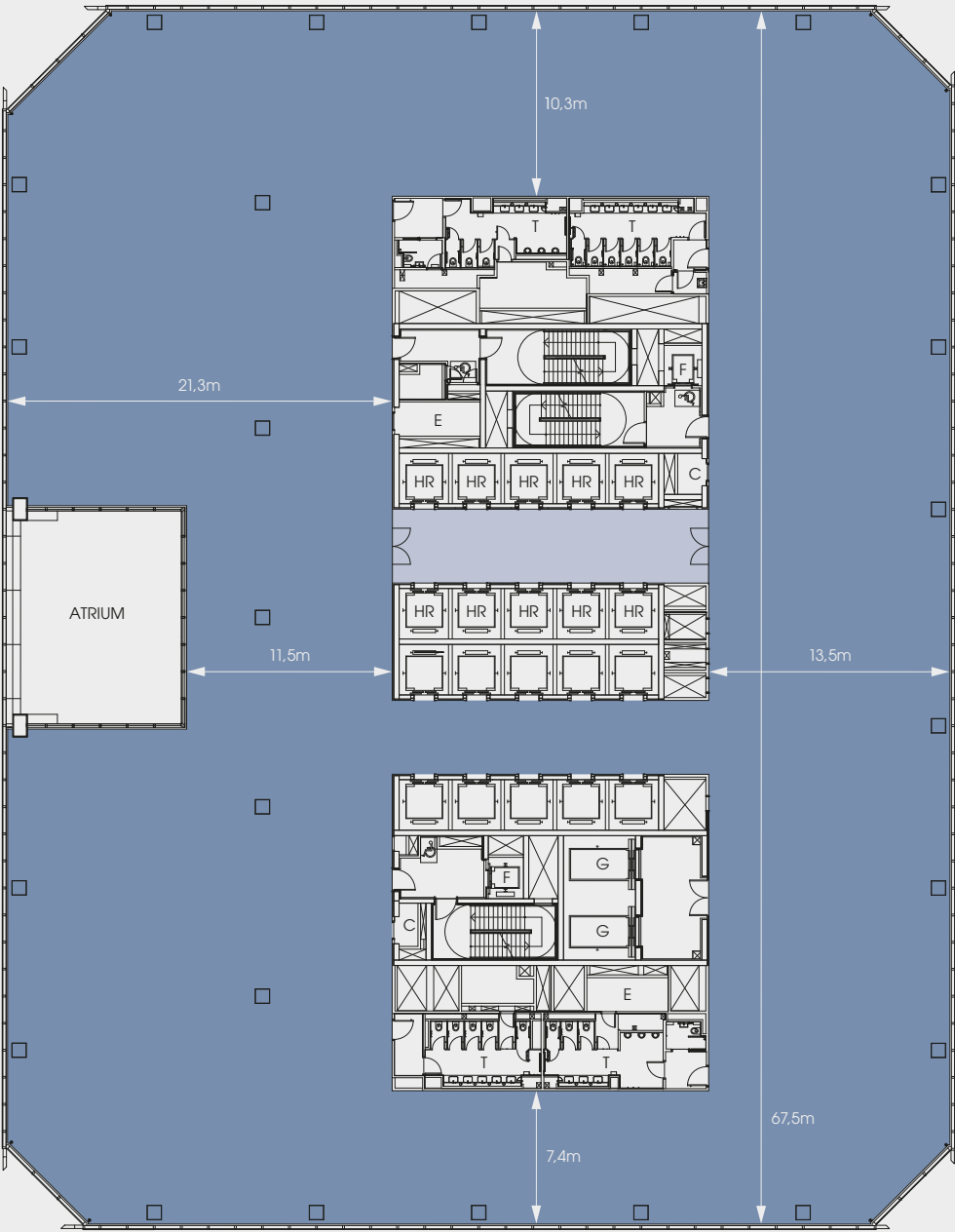


CHURCHILL
PLACE

Floor Plans



Level 11
27,934 sq ft
2,595 sq m

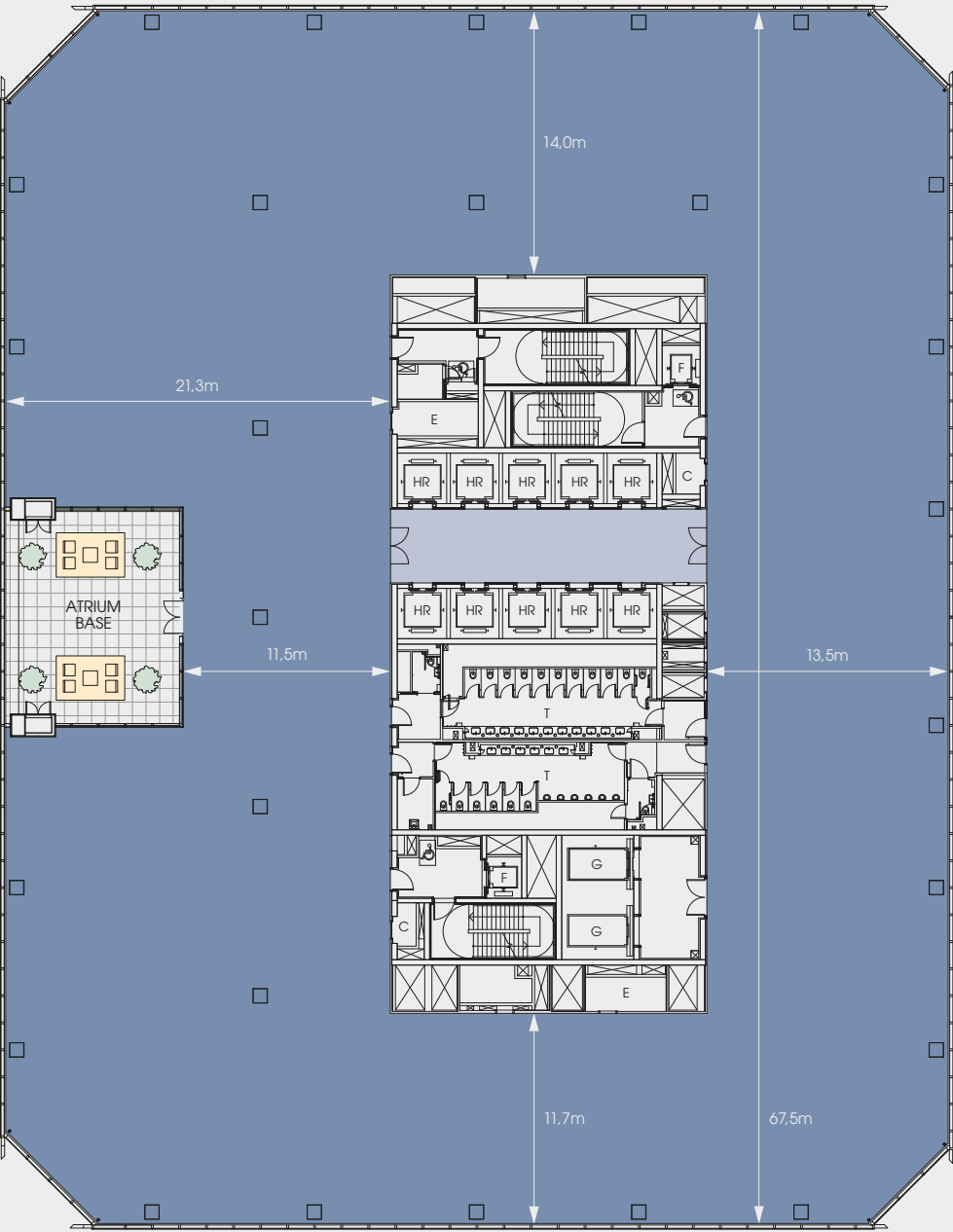


- Office
 - Core
 - Lift lobby
- HR High rise lift
G Goods lift
F Firemen's lift
E Electrical riser
T Toilets
C Communications riser

Floor Plans



Level 13
28,758 sq ft
2,671 sq m

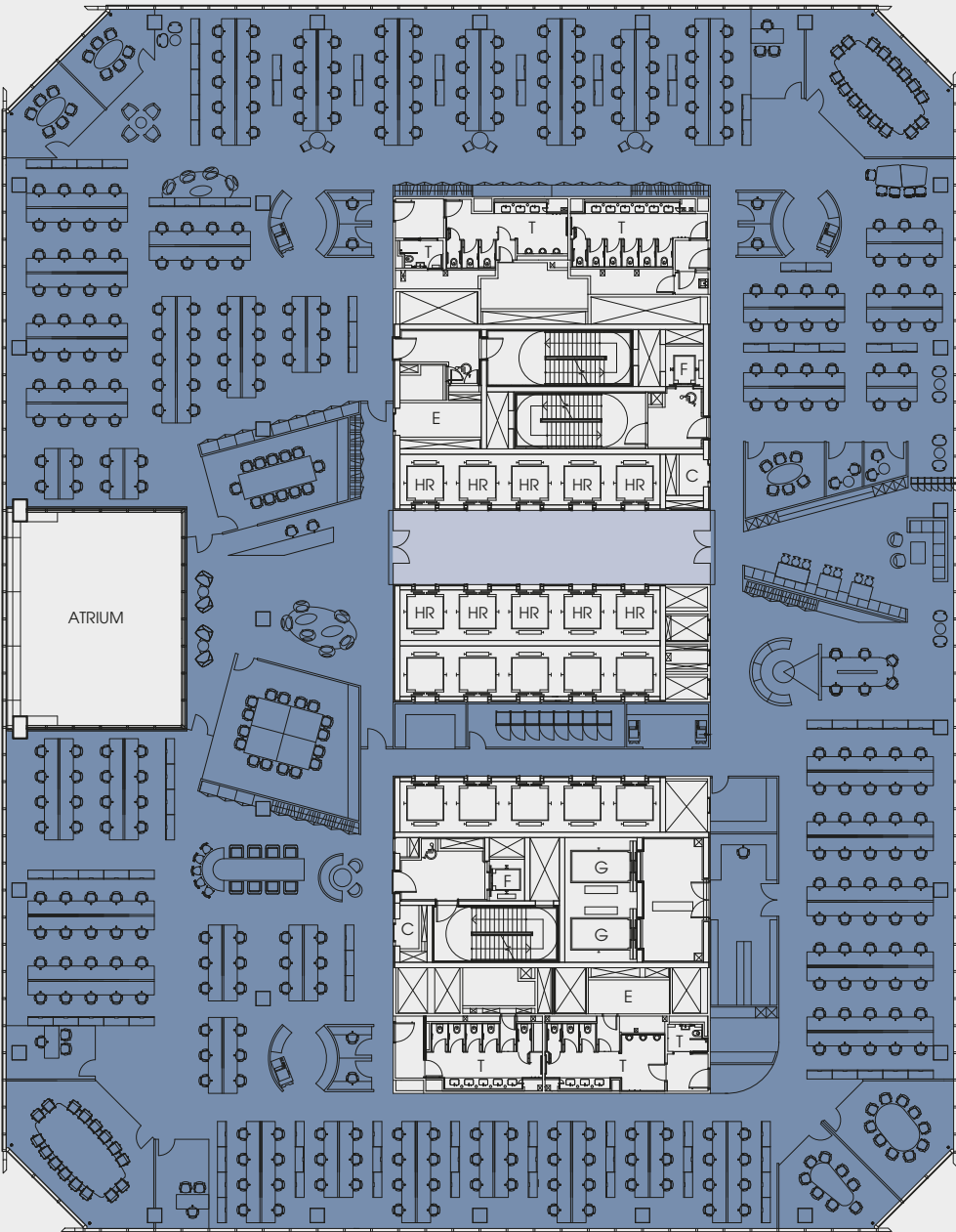


- Office
 - Core
 - Lift lobby
- HR High rise lift
G Goods lift
F Firemen's lift
E Electrical riser
T Toilets
C Communications riser

Space Plans



Level 11
Media Open Plan
27,934 sq ft
2,595 sq m



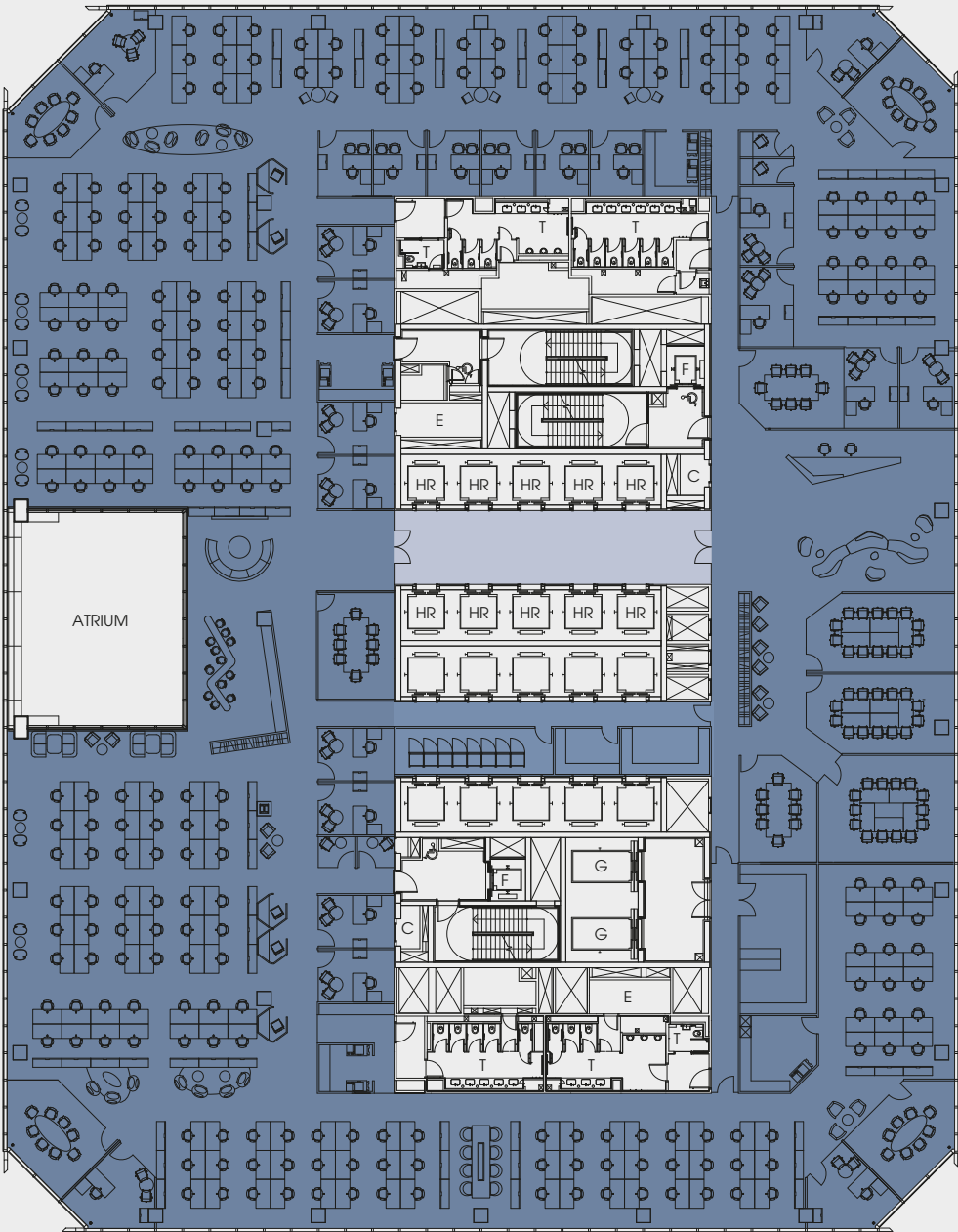
Open Plan Workstations	322
Receptionists	2
TOTAL WORKSTATIONS	324
Meeting Rooms (16 Person)	3
Meeting Room (12 Person)	1
Multifunction Room (10 Person)	1
Multifunction Room (8 Person)	1
Meeting Rooms (6 Person)	3
Quiet Rooms (2 Person)	2
Private Offices	4
Copy Rooms	4
Vend & Breakout Area	1
Innovation Lab	1
Server Room	1
Goods In & Post Room	1
Store Room	1
Vending Room	1
Pantry	1
Informal Meeting Area	1
IPR per TOTAL WORKSTATIONS	
86 sq ft/8 sq m	

- Office
 - Core
 - Lift lobby
- HR High rise lift
G Goods lift
F Firemen's lift
E Electrical riser
T Toilets
C Communications riser

Space Plans



Level 11
Corporate Open Plan
27,934 sq ft
2,595 sq m



Cellular Offices	22
Open Plan Workstations	236
Receptionists	2
TOTAL WORKSTATIONS	260

Multifunction Rooms (8 Person)	2
Multifunction Rooms (14 Person)	2
Meeting Room (14 Person)	1
Quiet Rooms	4
Copy Rooms	4
Vend & Breakout Area	1
Server Room	1
Goods In & Post Room	1
Store Room	1
Pantry	1
Informal Meeting Area	1

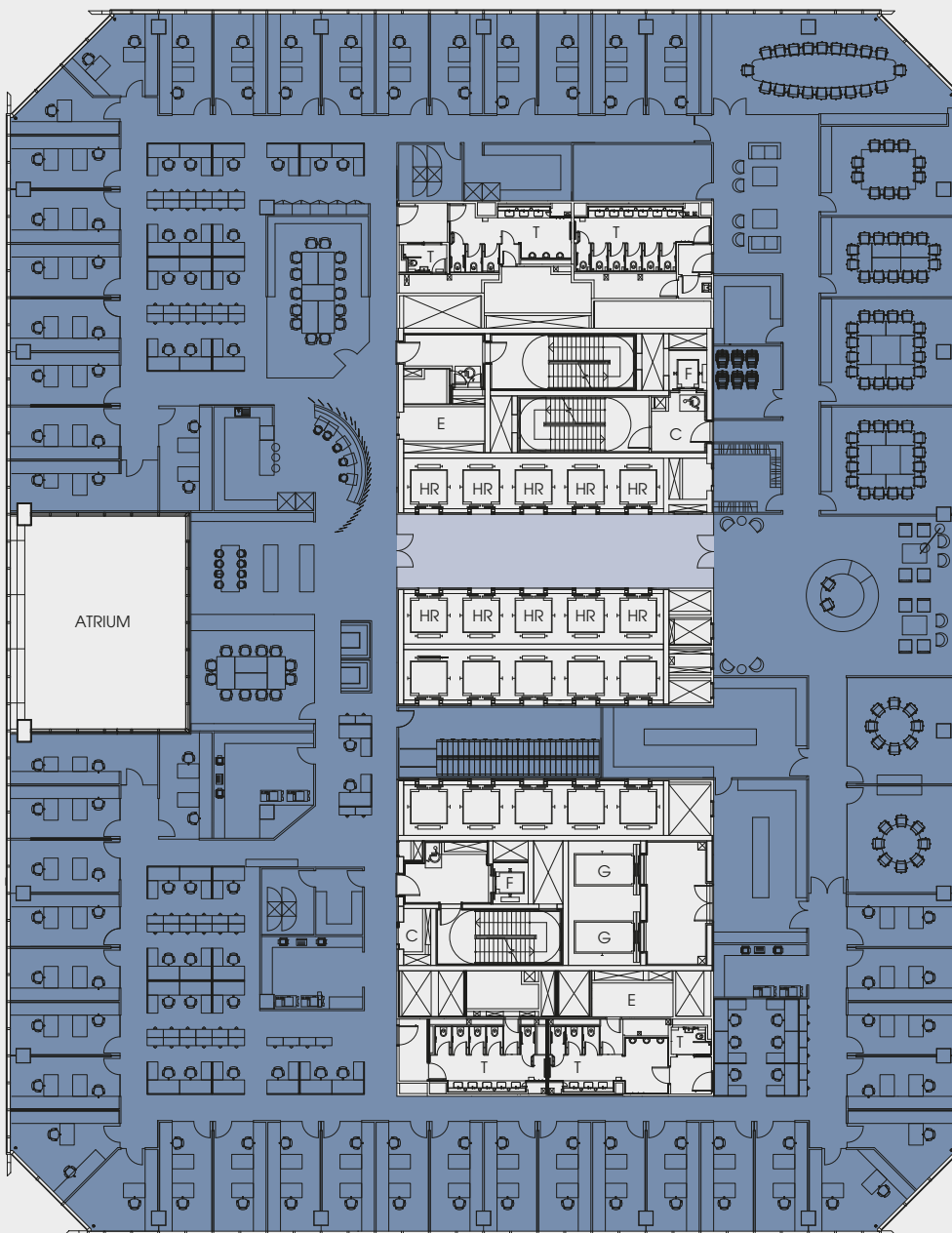
IPR per TOTAL WORKSTATIONS	
107 sq ft/10 sq m	

- Office
 - Core
 - Lift lobby
- HR High rise lift
G Goods lift
F Firemen's lift
E Electrical riser
T Toilets
C Communications riser

Space Plans



Level 11
UK Legal
27,934 sq ft
2,595 sq m



Single Fee Earner Offices	3
Double Fee Earner Offices	88
TOTAL FEE EARNERS	91

Administrative Assistants (1 AA / 4 FE)	23
Business Support	15
TOTAL WORKSTATIONS	129

Meeting Room (20 Person)	1
Multifunction Rooms (16 Person)	2
Case Room (14 Person)	1
Multifunction Room (14 Person)	1
Meeting/Training Room (12 Person)	1
Meeting Room (10 Person)	1
Dining/Meeting Rooms (8 Person)	2
Print & Copy Rooms	3
Server Rooms	2
Vend & Breakout Areas	2
Filing Room	1
Store Rooms	2
Pantry	1
Kitchen	1
Goods In & Post Room	1
Library	1

IPR per TOTAL WORKSTATIONS	
217 sq ft/20 sq m	

- Office
- Core
- Lift lobby

- HR High rise lift
- G Goods lift
- F Firemen's lift
- E Electrical riser
- T Toilets
- C Communications riser

